

1 Dual Switch Push Plate

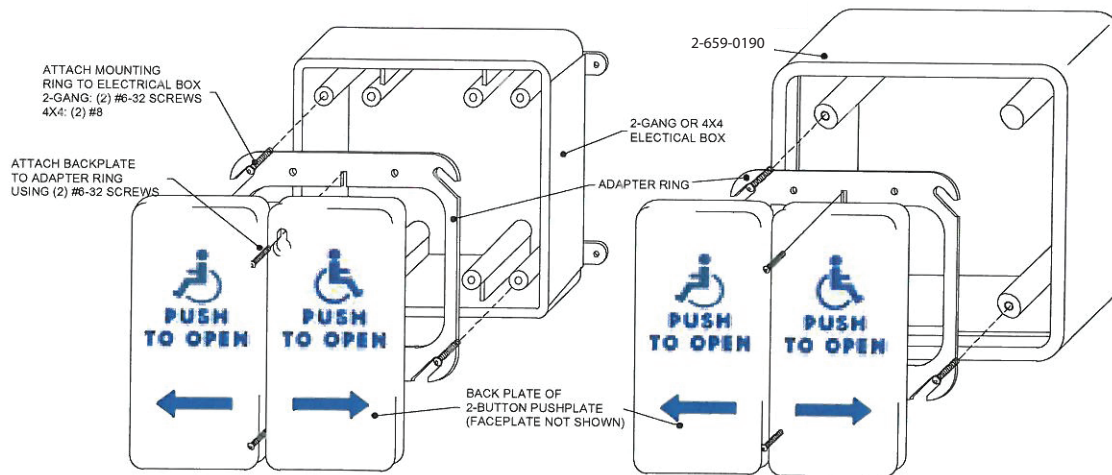
This push plate is designed to fit into either double-gang or 4x4 electrical boxes. Typical uses include controlling inside and outside doors of a vestibule. The faceplates are made of 1/16" thick stainless steel for durable use. The push plate may be hard wired to the door operator or connected to one of Hager Companies' line of radio-controlled transmitters.

2 Related Optional Accessory

RADIO CONTROLLED TRANSMITTER AND RECIEVERS: Wide range of analog and digital transmitters and receivers.

3 Installation Instructions

1. Attach the adapter ring to the electrical box. Use (2) #6-32 screws for 2-gang electrical boxes or (2)#8-32 screws for 4x4 boxes.
2. Wire the switches of the push plates to the door controllers or radio-controlled transmitters using the NO or NC contacts and common.
3. Start (2) #6-32 screws into the center holds of the adapter ring. Place the keyway-shaped holes of the backplate over the holes and fully tighten the screws with the enclosed hex key.
4. Test the push plates for proper activation.



4 Push Plate Cleaning

The push plates are constructed with durable stainless steel and painted with scuff-resistant coatings. To clean the plates, use only a damp, non-abrasive cloth. Repeated cleaning with harsh solvents or abrasive materials may cause deterioration of the coating. Please make the end-user aware of this procedure.